

used in troparia,  
"God is the Lord" matins,  
Cannons



# GLORY TO THEE ...-IRMOLOGIC TONES:

The Basic Scale for Tones 1 and 5:



Ne Pa Vou Ga Dhi Ke Zo Ne

*musical Byzantine  
alphabet ~ similar to  
Sol-feg (ex. Do, Re, Mi...)*

Apichima for Tone 1:



Pa                      Dhi      Ga      Vou      Pa  
(Ison/Perfect)\*   (Imperfect)\*   -   -   Final\*  
*↳ end note of ind. clause   ↳ end. note of dep. clause   ↳ end note of last note of a song/hymn*

Apichima for Tone 5:



Ke      Zo      Ne      Zo      Ke  
(Ison/Perfect) - (Imperfect) - Final

\*See Definitions on Next Page

*the  
Byzantine Project  
Kazan*

*Guide to the music  
of the Eastern Orthodox  
Church  
Longy, Kostea & etc  
Crearta*

*Overview of  
all Tones*

# GLORY TO THEE...-TROPARION TONES:

## Basic Scale for Tones 2 and 6:



Ne Pa Vou Ga Dhi Ke Zo Ne

## Apichima for Tone 2:



Dhi Ke Dhi Ga Vou Dhi  
(Ison/Imperfect) - - - (Perfect) Final

ison = G  
final = G

## Apichima for Tone 6:



Dhi Ke Dhi Ga Vou  
(Imperfect) - - - (Perfect/Final/Ison)

ison = E  
final = E

# GLORY TO THEE ... -TROPARION TONES:

The Basic Scale for Tones 3 and 7:



Ne Pa Vou Ga Dhi Ke Zo Ne

Apichima for Tone 3:



Ga Dhi Ke Dhi Ga Vou Pa Vou Ga  
(Ison) - (Imperfect) - - - (Perfect)\* - (Final)

\* And sometimes low Ne (see the scale just above).

Apichima for Tone 7:



Ga Zo Ke Dhi Ga  
(Perfect/Ison) - - (Imperfect)\* (Final)

\*And sometimes Pa (see the scale above).

# GLORY TO THEE . . .-TROPARION TONES:

The Basic Scale for Tones 4 and 8:



Ne Pa Vou Ga Dhi Ke Zo Ne Zo Ke Dhi Ga Vou Pa Ne

Apichima for Tone 4:

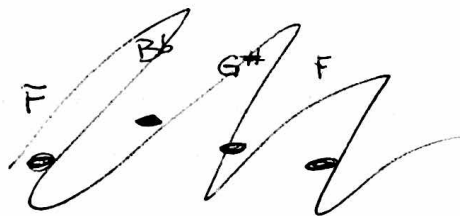


Dhi Ga Vou Pa  
(Imperfect) - (Imperfect/Perfect/Final/Ison) (Imperfect)

Apichima for Tone 8:



Ga Ke Dhi Ga  
(Perfect/Ison) - (Imperfect) (Final)



Sarah's apichima to begin chanting